

COMPUTATION AND CRAFT: SARUP TECHNOLOGY LECTURE SERIES

FALL 2009

All lectures occur on Thursdays, 12-1:30 pm, at Eppstein Uhen Architects: 333 East Chicago Street in the Third Ward. Lectures are free and open to the public. 1.0 AIA / Continuing Education System Learning Unit awarded for each lecture.



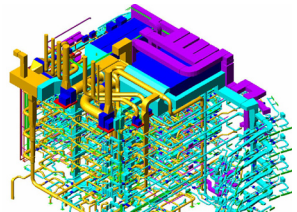
SEPTEMBER 24 : Zero Carbon Case Studies - James Wasley

James Wasley is an Associate Professor at UW-Milwaukee and is the SBSE Principal Investigator for the Carbon Neutral Design (CND) project, a joint effort by the AIA and the Society of Building Science Educators (SBSE) to produce educational and resource materials for carbon neutral design. This presentation will highlight case studies that relate to the CND project.



OCTOBER 8 : Sustainable Curtainwall Design Case Study - Chris Stutzki, Ph.D. - Stutzki Engineering

Stutzki Engineering, Inc. (SEI) is a consulting firm offering engineering services for architects and building contractors, in the field of structural glass, lightweight structures and building facades—combining state-of-the-art engineering and applied science with creative industrial design. This presentation will highlight an advanced sustainably-focused envelope design for a law school building in Baltimore, on which Stutzki is working in association with BEHNISCH Architekten and TRANSSOLAR.



OCTOBER 15 : BIM—The Engineering Perspective - Jerry Packham, Project Manager and Kyle Hansen, Designer - Affiliated Engineers, Inc.

Jerry Packham and Kyle Hansen, of Affiliated Engineers, Inc. (AEI), are integrally involved in the firms use of Building Information Modeling (BIM) based technologies and processes to improve project delivery and project performance. This presentation will highlight AEI's use of BIM from an engineering perspective and will feature examples from projects AEI has delivered utilizing BIM and other related methodologies.



NOVEMBER 5 : Integrated Project Delivery: Real World Projects - Mike Whaley, Director of Preconstruction Services - J.H. Findorff & Sons Inc.

Mike Whaley leads Findorff's preconstruction services and as a result is intimately familiar with virtual construction, Building Information Modeling (BIM) and Integrated Project Delivery (IPD). This presentation will highlight real-world projects, including the Wisconsin Institutes for Discovery project under construction at the University of Wisconsin, where these techniques and technologies have been utilized and have made a difference.



NOVEMBER 12 : SC Johnson Project Honor – Pioneering in Value Based Design and Construction

Kevin Bredeson – Director of Virtual Construction – Gilbane Building Company
Tracy Lutterman – Construction Project Manager, Corporate Facilities – SC Johnson Company
Jason Chandler – Project Manager – Epstein

Designed by world renowned architect Foster + Partners in association with Epstein, and constructed by Gilbane Building Company, Project Honor utilized a unique, collaborative approach to project delivery. The presentation will focus on the unique design of the facility and the necessary collaboration to be able to incorporate the unique design features. Emphasis will also be placed on the upfront collaboration of the integrated project team, the Building Information Model (BIM) and the use of Lean design and construction principles to maximize efficiencies in every aspect of the work.



NOVEMBER 19 : Fast, Cheaper, Better (and more sustainable) – A Case Study in Integrated Project Delivery

Martin Sell – President – MSA Integrated Project Delivery

MSA Integrated Project Delivery recently completed the five-acre Spirit of Africa Exhibit for the International Crane Foundation in Baraboo, Wisconsin. MSA Integrated Project Delivery acted as the IPD team leader for a team comprised of 11 companies. In this presentation, Martin will discuss how using an IPD approach allowed the team to complete the project meeting all of the owner's goals – on-time completion, financial performance more than 10% under budget, with levels of quality and sustainability beyond what was originally anticipated.