

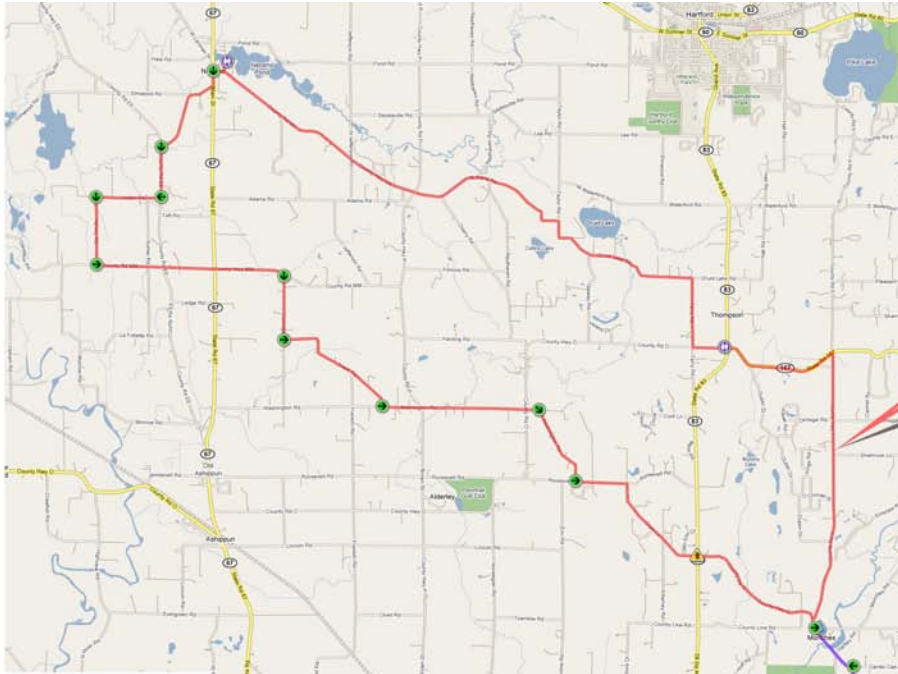
eppstein uhen : architects

# BEYOND DESIGN

— TOUR 09 —

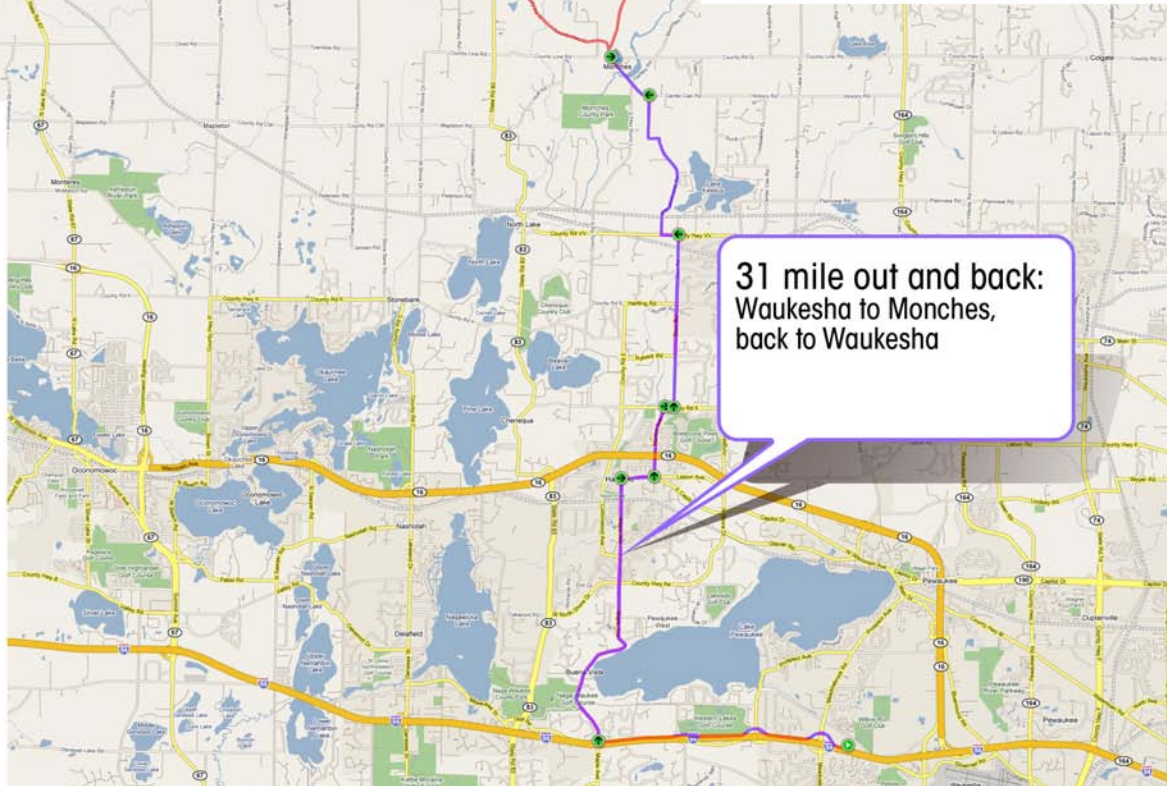


**Route Map**



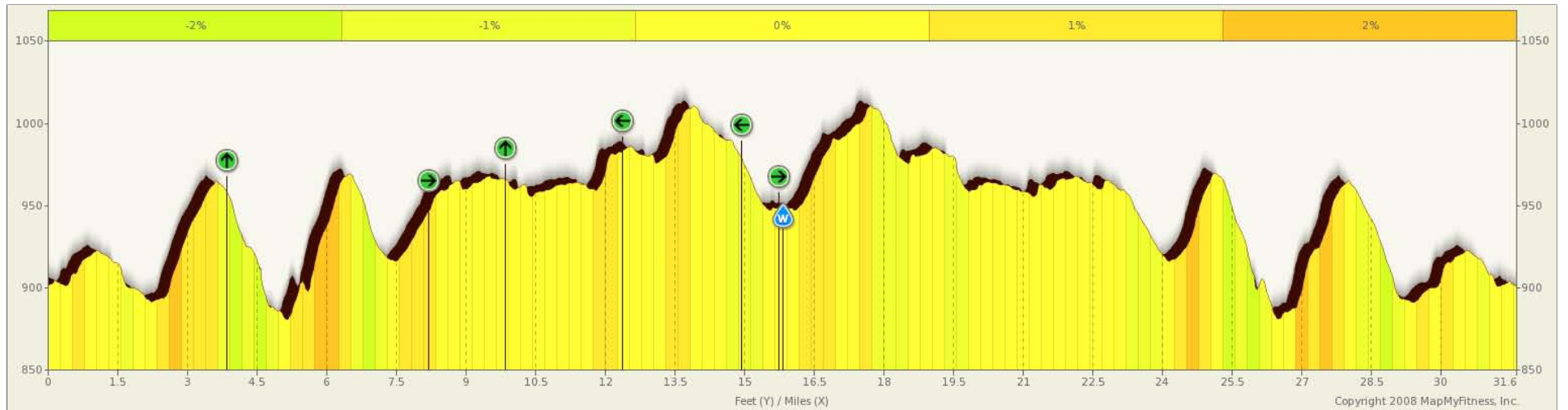
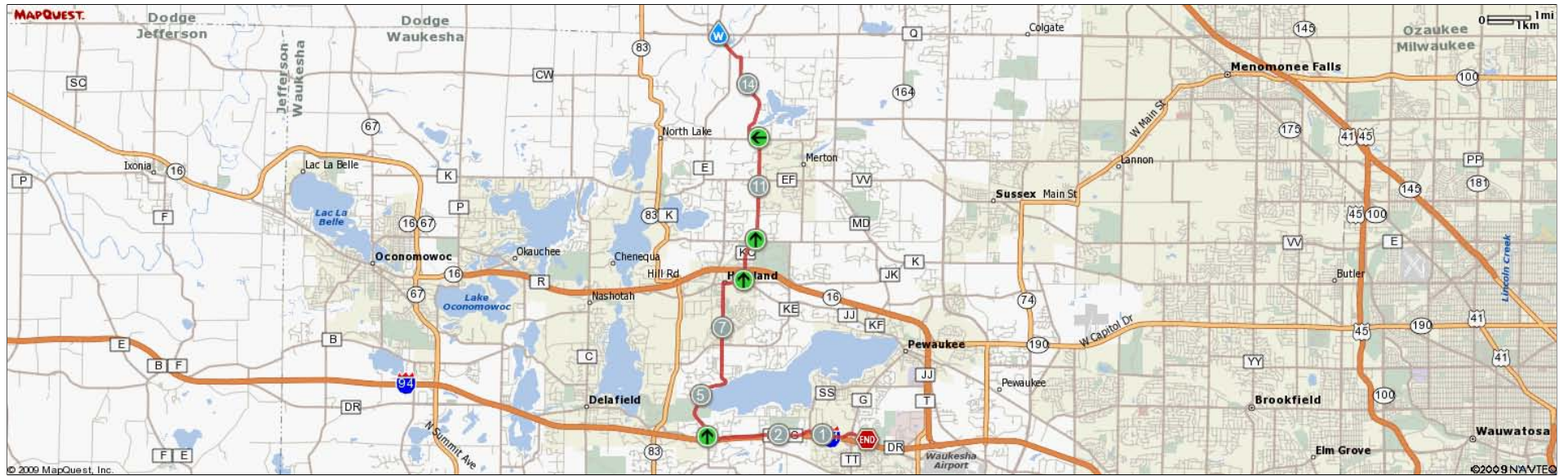
**35 mile loop:**  
Monches to Neosho, back to  
Monches\*

\*100 mile riders do this loop twice

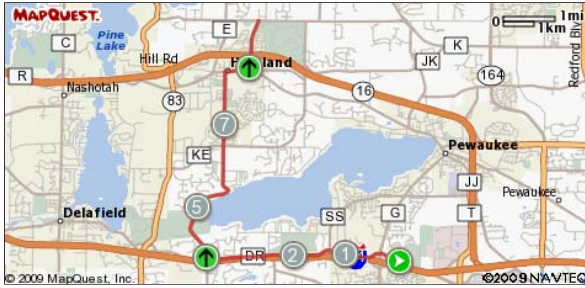


**31 mile out and back:**  
Waukesha to Monches,  
back to Waukesha

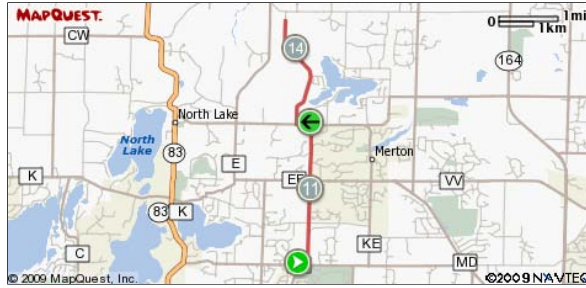
# Waukesha to Monches Map, 31 mile out and back



# Waukesha to Monches Detailed Map, 31 mile out and back



Notes		
AT	FOR	NOTES
3.84 mi.	4mi 1777ft	Turn right(north) on Maple Ave.
8.18 mi.	2546ft	Turn right(east) at E Capitol Dr
8.67 mi.	1mi 176ft	Turn left(north)at Merton Ave
9.7 mi.	700 ft	Turn right(east) at County Rd K until firstleft
This segment shows [2]9.7 mi. (51,224 ft.) of your route.		

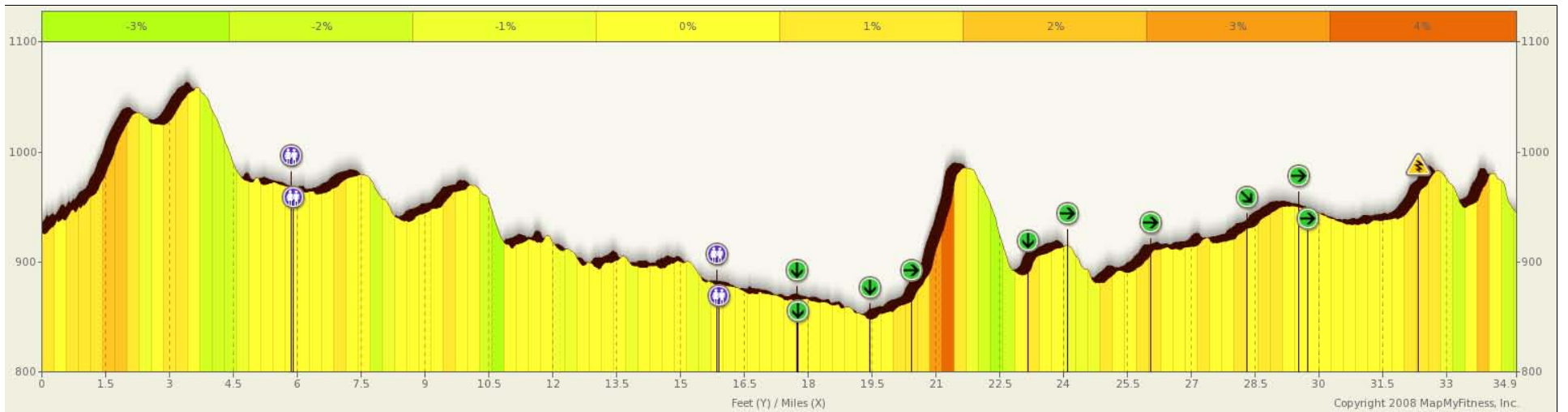


Notes		
AT	FOR	NOTES
9.83 mi.	2mi 2696ft	Turn left(north) on Dorn Road
12.35 mi.	1329ft	Turn left(west) at County Rd VV CAUTION BUSY INTERSECTION
12.6 mi.	2mi 1631ft	Turn richt(north) at Camp Whitcomb Mason Road
This segment shows [2]5.2 mi. (27,480 ft.) of your route.		



Notes		
AT	FOR	NOTES
14.91 mi.	1737ft	Turn left(west)on Center Oak Road
15.23 mi.	2564ft	Continue. Center Oak Rd becomes E TRAFFIC ON LEFT DOES NOT STOP
15.72 mi.	388ft	Turn right(east) at County Rd Q to rest stop
15.8 mi.	-	Water
This segment shows [2]16.69 mi. (88,121 ft.) of your route.		

# Monches to Neosho to Monches Map, 35 mile loop (counter clockwise)



# Monches to Neosho to Monches Detailed Map, 31 mile loop (counter clockwise)



Notes		
AT	FOR	NOTES
4.13 mi.	1mi 3804ft	Turn left (west) on hwy 167. 4-way stop
5.85 mi.	259ft	4 way stop. Continue on straight on County Rd O
5.9 mi.	187ft	BP gas station. Not a scheduled stop.
6.4 mi.	3mi 1066ft	Turn Right (north) on Terry Road Turn Left on Druid Lake road about 7.7
9.6 mi.	908ft	Turn left (west) to stay on Druid Lake Rd
9.77 mi.	1281ft	Druid Lake Rd turns right (north) and becomes Taylor Rd
10.01 mi.	2mi 2341ft	Turn left (west then nw) at Paine Rd
12.46 mi.	3mi 53ft	Continue on County Rd NN (nw)
15.47 mi.	2283ft	Continue on E Lehman St
15.9 mi.	239ft	Turn Right (north) on Woodlawn St
15.95 mi.	304ft	Woodlawn Park Reststop with Shelter



Notes		
AT	FOR	NOTES
16 mi.	239ft	Woodlawn Park Reststop with Shelter
16.05 mi.	1529ft	Turn Right (north) on Woodlawn St
16.34 mi.	1129ft	back track on Woodlawn then right on e. Lehman and Left (South) on 67/ S. Shulyler st.
16.55 mi.	1mi 1533ft	Turn right at Riverview Dr / NN by the BP Station
17.88 mi.	3868ft	Turn Left(south) on County Rd EE
18.61 mi.	5074ft	Turn Right(west)on Indian Rd
19.57 mi.	5151ft	Turn Left (south) on Harvey
20.55 mi.	2mi 4071ft	Turn Left (east) on County Road MM
23.32 mi.	4890ft	Turn right (south) on Coolidge Rd



Notes		
AT	FOR	NOTES
24.27 mi.	1mi 5015ft	Turn Left (east) on Creek Rd and follow the bend south - se on Creek
26.22 mi.	2mi 1475ft	Turn Left (east) on Washington Rd
28.5 mi.	1mi 1123ft	Veer Right (southeast) and stay on Washington Rd
29.71 mi.	1192ft	Turn Left (east) on Roosevelt Rd
30.68 mi.	1mi 4572ft	Turn right (south) on Clare Ln (Watch for big pot hole on right as you turn)
32.55 mi.	54ft	Hazard Busy Intersection with HWY 83. Cross Traffic does NOT stop.
32.56 mi.	2mi 1178ft	Continue straight (east) on County Rd Q. Use caution with some steep decents over next 2 miles.
34.78 mi.	467ft	Hazard. Cross Traffic does NOT stop on Hwy K. Use caution.
34.87 mi.	-	Rest Stop.

## Emergency Contacts

Major Injury	911
Paratech Ambulance Dispatch / Minor Injury	262.820.1111
Unable to finish	Andres: 414.651.8522
Bike Break Down / Lost	414.271.5350
Rich Tennesen	414.406.0104
Rest Stop Contact	Gail: 414.759.5314

# THANK YOU SPONSORS!

Major Sponsors:



starkmedia



**Participating Sponsors:** Johnson Bank | J.P. Cullen and Sons, Inc. | Tushaus Computer Services | Wipfli | MasterGraphics | Mortenson Construction | R.A. Smith National, Inc. | Poblacki Sign Company | Benefits Services Group | Blueprints Inc. | Affiliated Engineers, Inc.

**Contributing Sponsors:** Gilbane Inc. | KJWW | Beyer Construction | BCI Group | Cornerstone Financial Group | Cobb Strecker Dunphy & Zimmermann, Inc | Rx Property Management | Hinshaw & Culbertson LLP | Newforma | Pierce Engineers, Inc.

**In-Kind Supporters:** C. Coakley Relocation Systems | Tricia Shay Photography | UWM College for Kids | UWM College for Teens | Team Sports, Inc. | Beeler Construction | Paratech Ambulance | Schlossman Honda City

